



FEYZİYE SCHOOLS FOUNDATION

**IŞIK UNIVERSITY**



**İstanbul, Türkiye**

## UNDERGRADUATE PROGRAMS

Şile Campus

### FACULTY OF ENGINEERING AND NATURAL SCIENCES

- Biomedical Engineering (English)
- Civil Engineering (English)
- Computer Engineering (English)
- Electrical and Electronics Engineering (English)
- Industrial Engineering (English)
- Mechanical Engineering (English)
- Mechatronics Engineering (English)
- Software Engineering (English)



### FACULTY OF ARTS, DESIGN AND ARCHITECTURE

- Architecture (English)
- Cinema and Television (Turkish)
- Industrial Design (Turkish)
- Interior Architecture and Environmental Design (Turkish)
- Interior Architecture and Environmental Design (English)
- Visual Communication Design (Turkish)



Virtual Tour



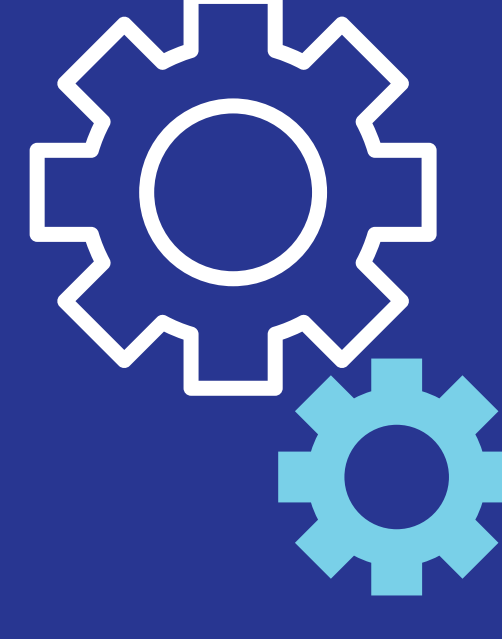
Find Out Your Eligibility



Apply Now

### FACULTY OF ECONOMICS, ADMINISTRATIVE AND SOCIAL SCIENCES

- Business Administration (English)
- Economics (English)
- International Relations (English)
- International Trade and Finance (English)
- Management Information System (Turkish)
- Management Information System (English)
- Psychology (Turkish)
- Psychology (English)



## VOCATIONAL SCHOOL PROGRAMS

Maslak Campus

Day and Evening Education (Turkish)

- Computer Programming
- First Aid and Emergency
- Graphic Design
- Medical Imaging Techniques
- Medical Laboratory Techniques
- Operation Room Services
- Opticianry

Day Education (Turkish)

- Anesthesia
- Foreign Trade

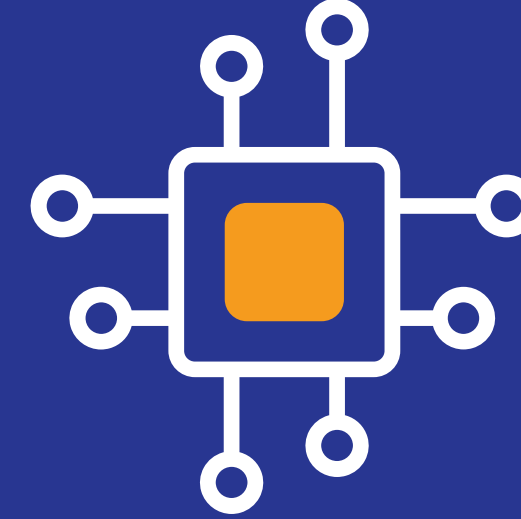


## GRADUATE PROGRAMS

Maslak Campus

### MASTER'S PROGRAMS IN ENGLISH

- Applied Economics (Thesis and Non-Thesis)
- Civil Engineering (Thesis and Non-Thesis)
- Computer Engineering (Thesis and Non-Thesis)
- Electronics Engineering (Thesis and Non-Thesis)
- Executive MBA (Thesis and Non-Thesis)
- Industrial Engineering (Thesis and Non-Thesis)
- Information Technologies (Thesis and Non-Thesis)
- International Relations (Thesis and Non-Thesis)
- Management Information Systems (Non-Thesis)
- Mechanical Engineering (Thesis and Non-Thesis)



### PHD PROGRAMS

- Computer Engineering (English)
- Contemporary Business (English)
- Electronics Engineering (English)
- Mathematics (English)
- Science of Art (Turkish)



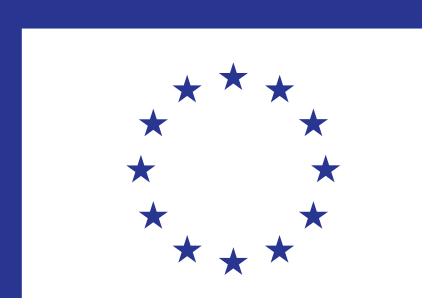
international.admissions@isikun.edu.tr | School of Graduate Studies: sgs@isikun.edu.tr  
Phone: +90 216 444 0 799 | www.isikun.edu.tr/international

@isik.international

fisikinternational

Şile Campus: Meşrutiyet Mahallesi, Üniversite Sokak No: 2 Şile / İstanbul

Maslak Campus: Büyükdere Caddesi No: 194 Maslak / İstanbul



Funded by the European Union